

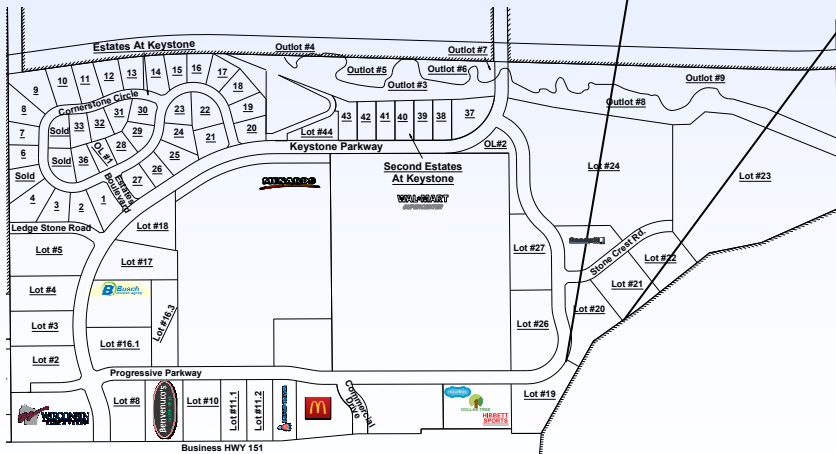
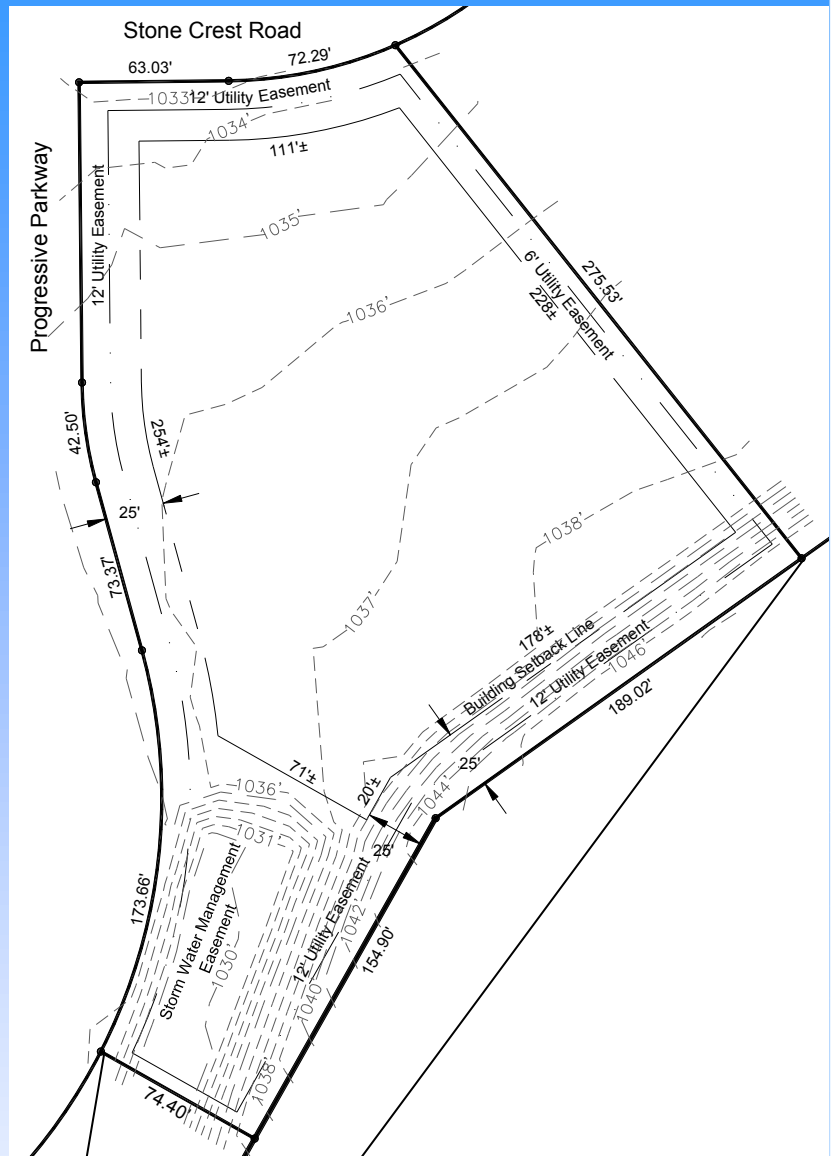
Keystone Development

Lot Area: 1.79 acres
77,815 sq. ft.

Zoning: B-3, Highway Business

- * Water Service:
6" PVC (at lot line)
- * Sanitary Sewer Lateral:
6" PVC (at lot line)
- * Storm Sewer Connection:
Direct to On Site Pond
- * Storm Water Management:
Regional and On Site
- * Natural Gas: 4" Plastic
(Alliant Energy) (at lot line)
- * Electric: 2.4 KV
(Alliant Energy)
- * Telephone/Data/CATV:
CenturyLink
- * Fiber Optic: CenturyLink— 1GBS
(Available)

Access: Progressive Parkway
Stone Crest Road



147 Keystone Parkway STE 115
Platteville, WI 53818

Fax: (608) 348-9929

Email: Info@plattevildevelopment.com

Phone: (608) 216-6014

Email:

Jim.Schneller@plattevillevilledevelopment.com