

Lot # 21

Keystone Development

2021 Stone Crest Road
Platteville, WI 53818

Lot Area: 1.57 acres
68,561 sq. ft.

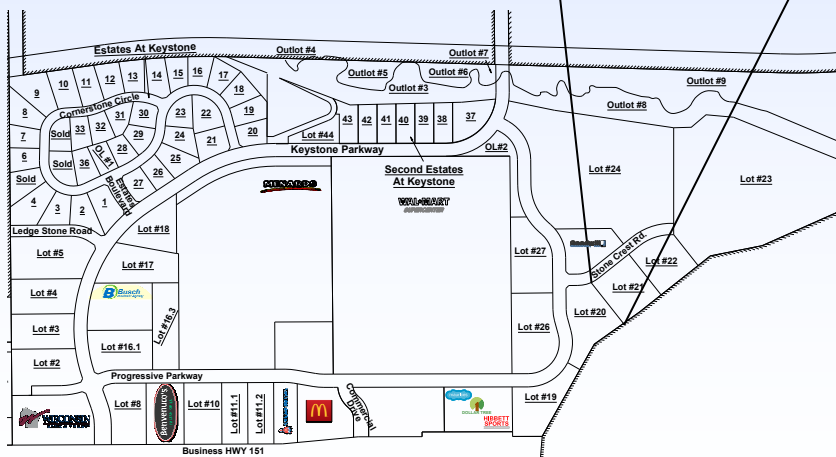
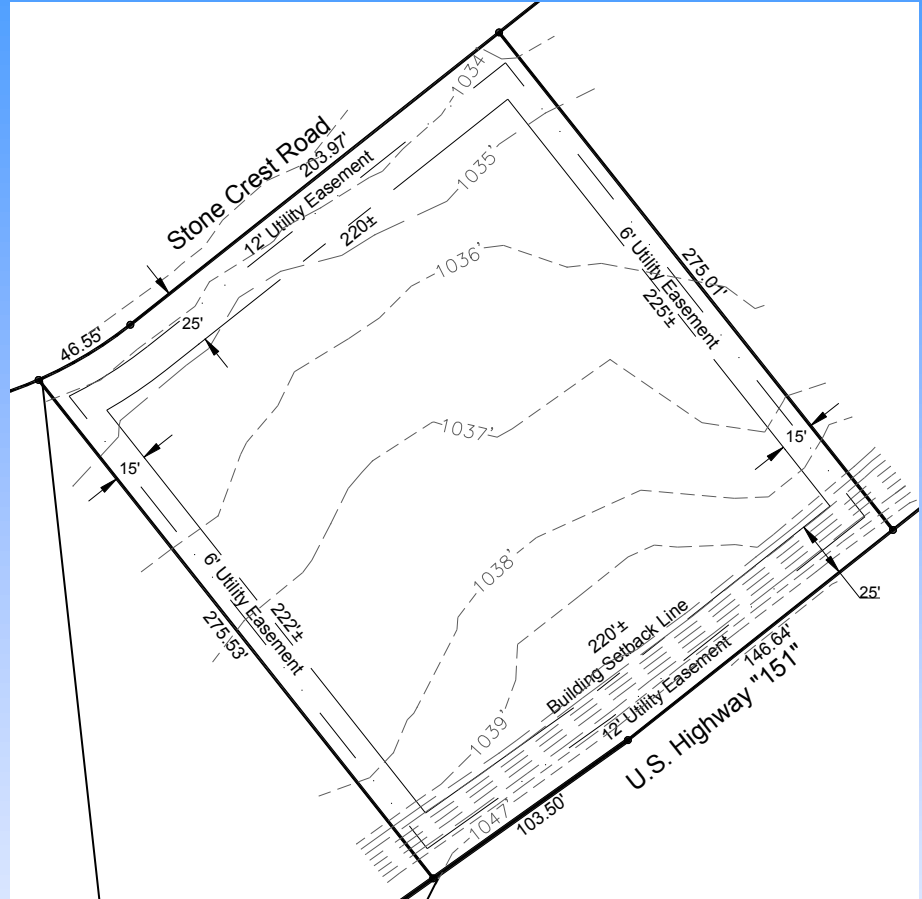
Lot Dimensions: 251' x 276'

Zoning: B-3, Highway Business

Utilities Information:

- * Water Service:
6" PVC (at lot line)
- * Sanitary Sewer Lateral:
6" PVC (at lot line)
- * Storm Sewer Connection:
Direct to On Site Pond
- * Storm Water Management:
Regional and On Site
- * Natural Gas: 4" Plastic
(Alliant Energy)
- * Electric: 12.4 KV
(Alliant Energy)
- * Telephone/Data/CATV:
CenturyLink
- * Fiber Optic: CenturyLink-
1GBS (Available)

Access: Stone Crest Road



Platteville Development Group

147 Keystone Parkway STE 115

Platteville, WI 53818

Phone: (608) 348-3225

Fax: (608) 348-9929

Email: Info@plattevildevelopment.com

Contact: Jim Schneller

Phone: (608) 216-6014

Email:

Jim.Schneller@plattevildevelopment.com