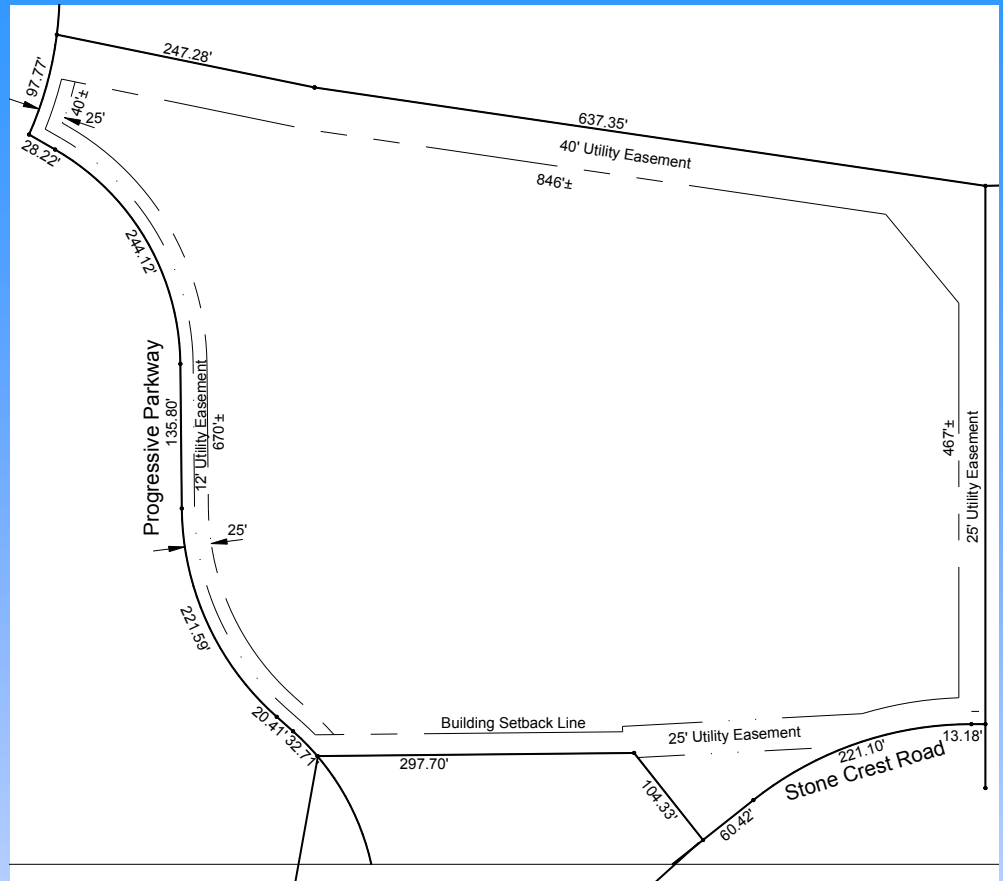


# Lot # 24

## Keystone Development

2101 Progressive Parkway  
2060 Stone Crest Road  
Platteville, WI 53818



Lot Area: 10.57 acres  
460,221 sq. ft.

Lot Dimensions: 506' x 985'

Zoning: R-3, Multi-Family Residential

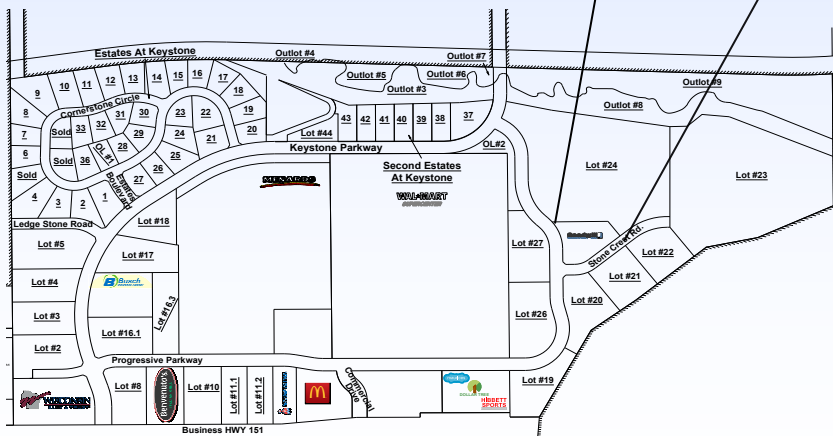
Utilities Information:

- \* Water Service: 8" PVC (at lot line)
- \* Sanitary Sewer: 8" PVC (at lot line)

- \* Storm Water Management & Storm Sewer: (on site Required)
- \* Natural Gas: 4" Plastic (at lot line)
- \* Electric: 12.4 KV (Alliant Energy)
- \* Telephone/Data/CATV: CenturyLink
- \* Fiber Optic: CenturyLink- 1GBS (Available)

Access: Progressive Parkway

Stone Crest Road



## Platteville Development Group

147 Keystone Parkway STE 115

Platteville, WI 53818

Phone: (608) 348-3225

Fax: (608) 348-9929

Email: [Info@plattevildevelopment.com](mailto:Info@plattevildevelopment.com)

**Contact: Jim Schneller**

Phone: (608) 216-6014

Email:

[Jim.Schneller@plattevildevelopment.com](mailto:Jim.Schneller@plattevildevelopment.com)