

Lot #11.1

(Lot # 3 of CSM #1772)

Keystone Development

1711 Progressive Parkway
Platteville, WI 53818

Lot Area: 1.03 acres

44,668 sq. ft.

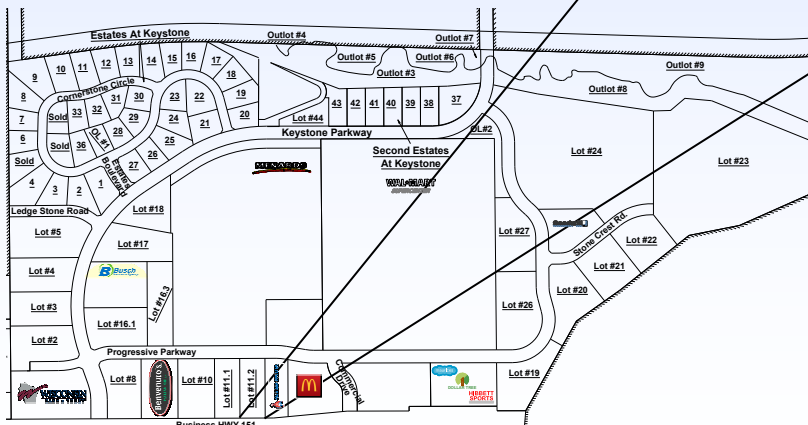
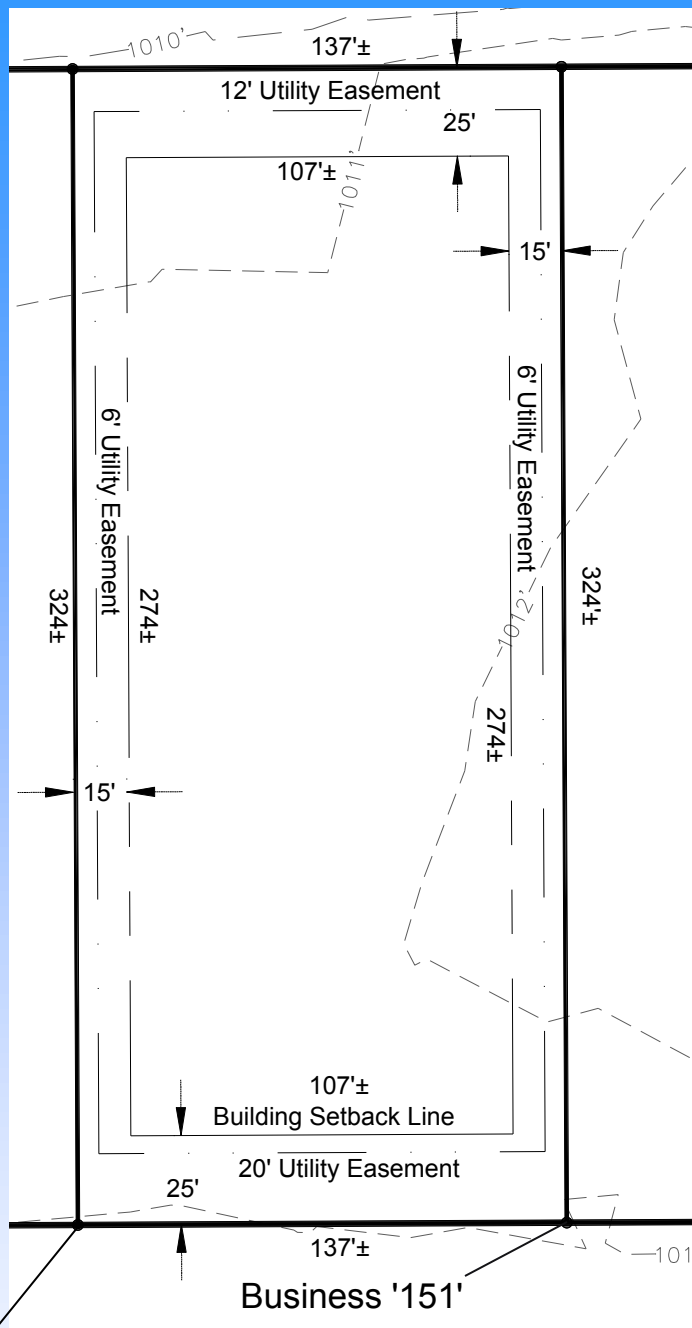
Lot Dimensions: 137' x 324'

Zoning: B-3, Highway Business

Utilities Information:

- * Water Service: 6" PVC
(at lot line)
- * Sanitary Sewer Lateral: 6" PVC
(at lot line)
- * Storm Sewer Connection:
18" RCP (at lot line)
- * Storm Water Management: Regional
(on site not required)
- * Natural Gas: 4" Plastic
(Alliant Energy) (at lot line)
- * Electric: 12.4 KV (Alliant Energy)
- * Telephone/Data/CATV:
CenturyLink
- * Fiber Optic: CenturyLink-1 GBS
(Available)

Access: Progressive Parkway



Platteville Development Group

147 Keystone Parkway STE 115

Platteville, WI 53818

Phone: (608) 348-3225

Fax: (608) 348-9929

Email: Info@plattevildevelopment.com

Contact: Jim Schneller

Phone: (608) 216-6014

Email:

Jim.Schneller@plattevildevelopment.com