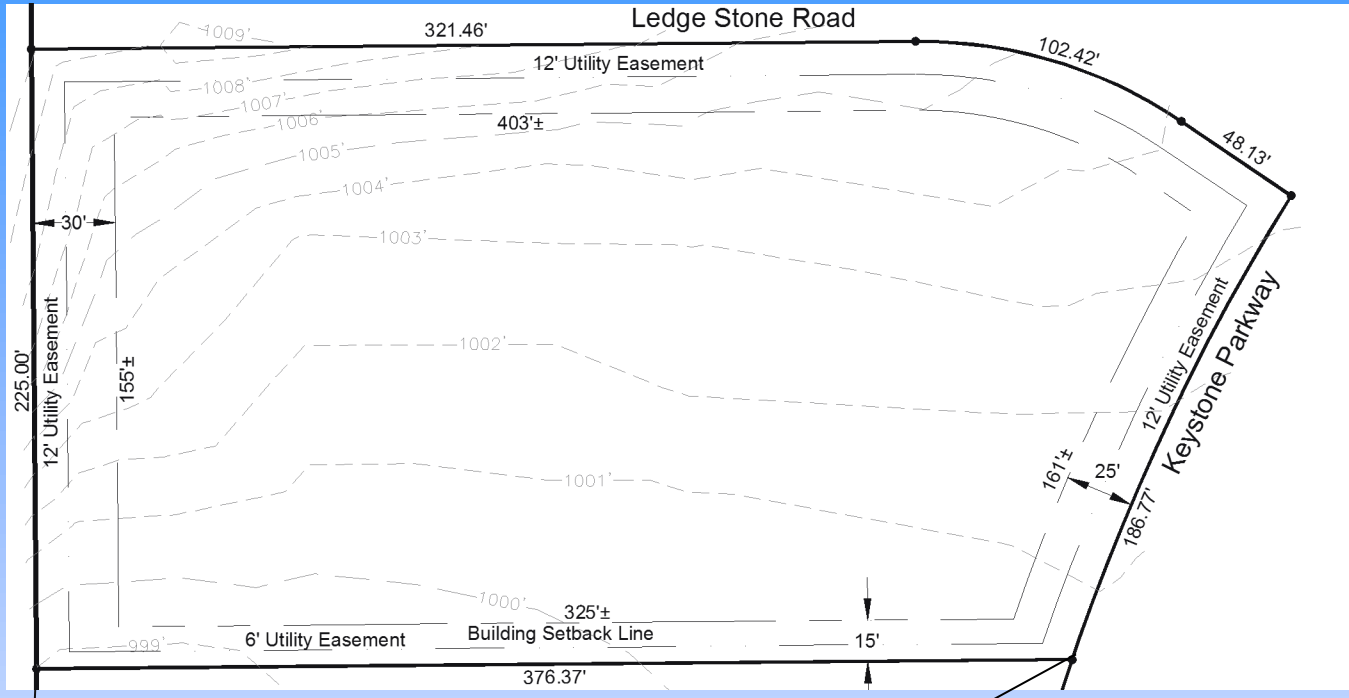


Lot # 5

Keystone Development

180 Keystone Parkway
Platteville, WI 53818



Lot Area: 2.13 acres
92,804 sq. ft.

Lot Dimensions: 225' x 370'

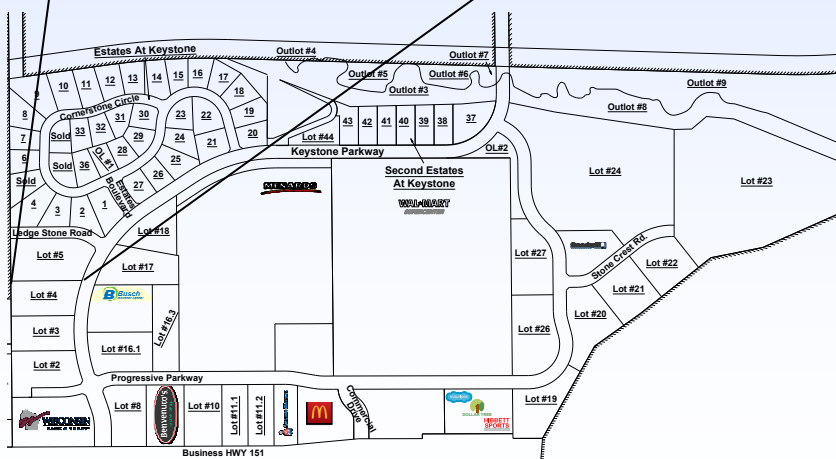
Zoning: B-3, Highway Business

Utilities Information:

- * Water Service: 6" PVC (at lot line)
- * Sanitary Sewer Lateral: 6" PVC (at lot line)

- * Sanitary Sewer Lateral: 6" PVC (at lot line)
- * Storm Sewer Connection: 18" RCP (at lot line)
- * Storm Water Management: Regional (on site not required)
- * Natural Gas: 4" Plastic (Alliant Energy) (at lot line)
- * Electric: 12.4 KV (Alliant Energy)
- * Telephone/Data/CATV: CenturyLink
- * Fiber Optic: CenturyLink-1GPS (Available)

Access: Keystone Parkway



Platteville Development Group

147 Keystone Parkway STE 115

Platteville, WI 53818

Phone: (608) 348-3225

Fax: (608) 348-9929

Email: Info@plattevildevelopment.com

Contact: Jim Schneller

Phone: (608) 216-6014

Email:

Jim.Schneller@plattevildevelopment.com